

XGS-2000M

16 x 10G SFP+ + 4 x 10G combo ports Managed Ethernet Switch

NEW



2

CTC Union Technologies unveils the brand-new gear to enable high-density 10G SFP+ slots Ethernet Switch. The XGS-2000M is designed to enable the application for aggregation network or core switching and connection for agile network deployment. It is equipped 16 ports 10G SFP+ slot + 4 ports 10G combo (10G SFP+ slot or 100M/1G/2.5G/5G/10G RJ45) in high performance switching and wire speed connectivity to boost the connection efficiency.

With anticipating AI-driven applications era is coming in the near future, every kind of appliance will be triggered to internet ready capability as it is aimed at the smart device. No matter what the enterprise or mission-oriented park such as hospital, manufacturing or campus etc. as well as SMB, they all have to keep the room and flexibility to expand the network capacity for increasing traffic from server, wireless access and IoT gears.

The 10G combo ports option maximizes the usability to extend the network deployment as you wish. When XGS-2000M is adopted in the access network deployment, it offers up to 20 10G fiber ports for highly extendable and easy installation features. The 10G RJ45 port is capable of supporting the NBase-T multi-gigabit standards to pave the way for future-proof WiFi 6E/7 gear and edge computing. It also can be used as the network expansion as connecting to the 10G fiber aggregation layer network. The business or telecom service provider can leverage XGS-2000M to provision 10Gbps speed migrated backbone network for multiple access and fulfilling versatile application scenarios.

The XGS-2000M is featured robust L2 switching functionality such as VLAN, port trunking, QoS, span tree protocol and IGMP multicast service as well as some L3 routing features included static route, RIP v1/v2, OSPF v2/v3 and VRRP. The hard-wired based ACL enabled the secured network access and traffic transportation as network administrator desired to reduce the risks of unauthorized or illegal intruders. The diversified management interfaces via Web GUI, Telnet and SNMP offer friendly and ease-to-use as well as secured remotely management in traffic encrypted or isolated. Also, the adaptive fan speed control design delivers the noise suppression operation as silent as possible by detecting the traffic load in real time.

Specifications

Interface	Fiber port: 16x 10G SFP+ Combo port: 4x (10G SFP+ slot or 100M/1G/2.5G/5G/10G RJ45) Console port: RS-232 in USB type C
Packet Forwarding Rate	14880pps @10Mbps 148800pps @100Mbps 1488000pps @1000Mbps 3720000pps @2.5Gbps 7440000pps @5Gbps 14880000pps @10Gbps
Switching Fabric Capacity	400Gbps
Transmission Method	Store and Forward Switching
Packet Buffer	32M bits
MAC Table Size	32K
Jumbo Frame Size	10K Bytes

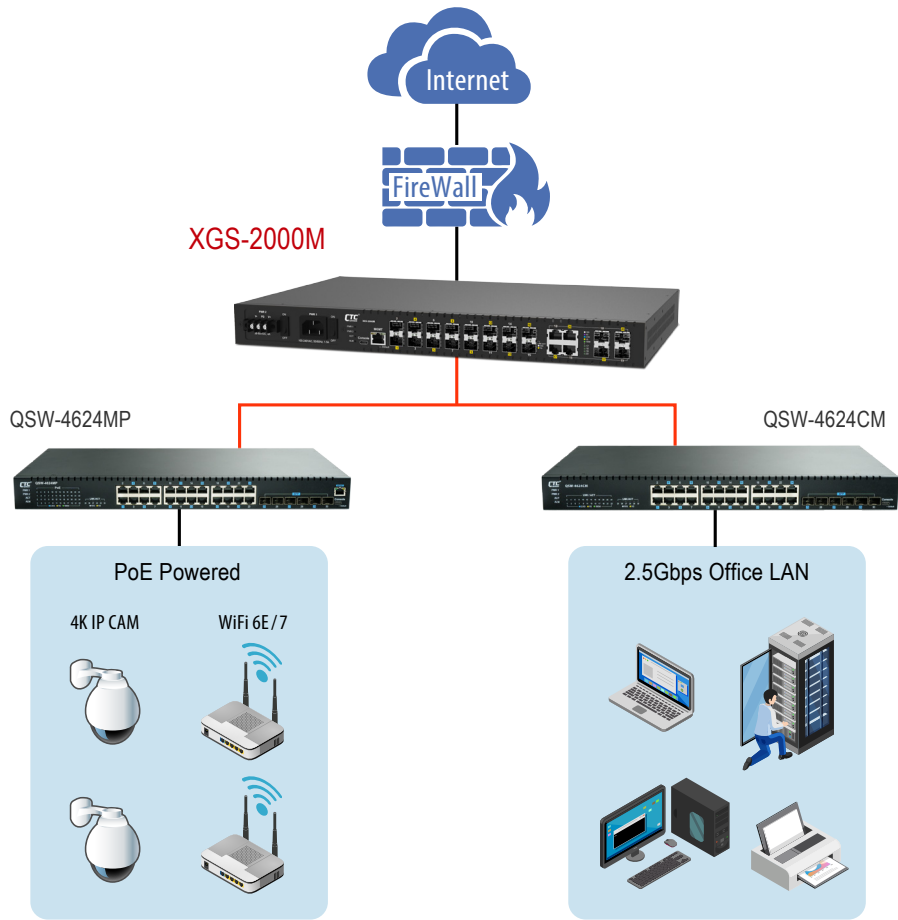
10G Ethernet Switch



VLAN Feature	IEEE 802.1Q tagged VLAN (4K VLAN groups) IEEE 802.1ad QinQ VLAN Voice VLAN, MAC based VLAN, Protocol based VLAN IP subnet based VLAN Private VLAN for port isolation, VLAN translation, GVRP
Link Aggregation	Static trunk (SA, DA, IP, TCP/UDP port) IEEE 802.3ad LACP, 10 LACP trunk groups Max; 8 port Max. per LACP trunk group IEEE 802.1AX
L2 Switching Protection	IEEE 802.1D STP/IEEE 802.1w RSTP/IEEE 802.1s MSTP Loop Protection
QoS Feature	Hard wired IEEE 802.1p 8 priority queues per port Traffic scheduling based on strict/WRR priority CoS based traffic classification on switch port, VLAN ID, DSCP, TCP/UDP port IEEE 802.1p priority tag remarking, DSCP remarking Per port/queue based ingress/egress rate limit in steps of 100kbps IEEE 802.3x flow control IEEE 802.1Qbb priority based full-duplex flow control Multicast/Broadcast/Unicast storm control with flooding control
Security	Static port security (MAC based) Per port limited MAC learning Port based/MAC base/single/multiple IEEE 802.1x access control 512 ACL rules based on L2~L4 information RADIUS/TACACS+ AAA HTTPs & SSH v2 IP/MAC binding IP source guard & ARP inspection
IP Multicasting	IGMP snooping v1/v2/v3, IGMP proxy MLD snooping v1/v2 IGMP fast leave IGMP query IGMP filtering/throttling MVR (Multicast VLAN Registration)
L3 Routing	Static route, RIP v1/v2, OSPF v2/v3, VRRP
Management	WebGUI/Telnet CLI interface SNMP v1/v2c/v3 RMON I (1,2,3,9 groups) & RFC1213 MIB II DHCP client/snooping/relay option 82 TFTP/HTTP based firmware and configuration upgrade Port mirroring, RSPAN Event syslog DNS client/proxy NTP client UPnP IPv4/IPv6 management SFF-8472 DDMI IEEE 802.1ab LLDP
Power Input	100~240VAC ; 36~60VDC
Power Consumption	< 50W
Operating Temperature	0~50°C
Storage Temperature	-25~70°C
Humidity	5%~95% (non-condensing)
Dimension	440 x 280 x 43.5 mm (W x D x H)
Certification	CE, FCC class A

Application

2



Ordering Information

Model Name	Description
XGS-2000M-AC	16 x 10G SFP+ Slots + 4 x 10G combo ports Managed Ethernet Switch with Single AC Power Supply
XGS-2000M-DC	16 x 10G SFP+ Slots + 4 x 10G combo ports Managed Ethernet Switch with Single DC Power Supply (-48V)
XGS-2000M-AA	16 x 10G SFP+ Slots + 4 x 10G combo ports Managed Ethernet Switch with Dual AC Power Supply
XGS-2000M-DD	16 x 10G SFP+ Slots + 4 x 10G combo ports Managed Ethernet Switch with Dual DC power Supply (-48V)
XGS-2000M-AD	16 x 10G SFP+ Slots + 4 x 10G combo ports Managed Ethernet Switch with AC + DC Power Supply

Optional Accessories

■ 10G SFP+ Transceiver Module

Model Name	Description
SFM-1000-SR85	10G SFP+ SR/SW MMF 300m, 850nm VCSEL, 10G Ethernet/FC/SDH/SONET
SFS-1010-LR31	10G SFP+ LR/LW SMF 10km, 1310nm DFB DML, 10G Ethernet/FC/SDH/SONET
SFS-1040-ER55	10G SFP+ ER/EW SMF 40km, 1550nm DFB EML, 10G Ethernet/FC/SDH/SONET
SFS-1080-ZR55	10G SFP+ ZR/EW SMF 80km, 1550nm DFB EML, 10G Ethernet/FC/SDH/SONET